

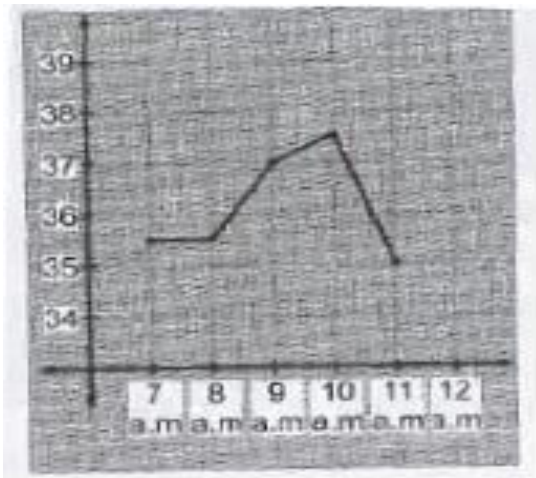
**ASSIGNMENT
CHAPTER-15**

1. Draw the points (5, 4) and (4, 5). Do they represent the same point?
2. Draw a line passing through (2, 1) and (1, 2). Find the coordinates of the points at which this line meets the x-axis and y-axis.
3. Draw the graph for the following table of values of time (in hours) and distances (in km) covered by a car.

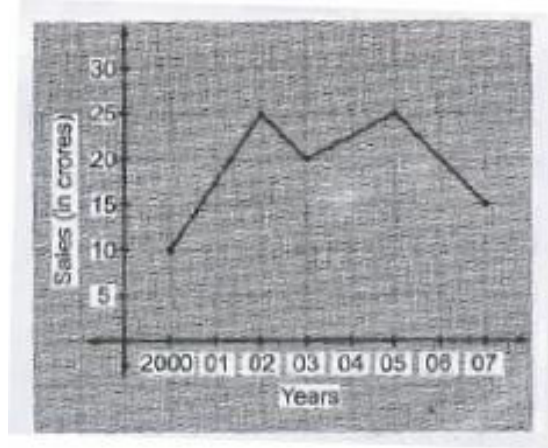
Time (in hours)	7:00	8:00	9:00	10:00
Distance (in km)	60	120	180	240

From the graph, find:

- (i) The distance covered by the car during the period 7:00 to 8:00.
 - (ii) At what time the car would have covered 180 km?
4. The graph shows the temperature of a patient recorded before noon. Read it and answer the following questions.



- (i) What was patient's temperature at 9 a.m.?
 - (ii) What the highest temperature of the patient?
 - (iii) When was the patient's temperature lowest?
 - (iv) During which period, the patient's temperature remained constant?
5. The graph shows the yearly sales figure of a shoe manufacturing company.

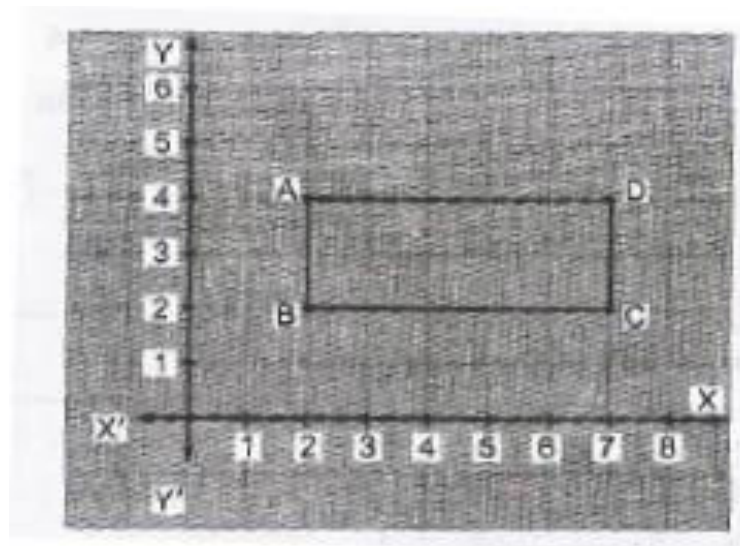


- (i) What were the sales in 2000?
- (ii) In which year the sales were maximum?
- (iii) What is the difference between the sales in the year 2003 and 2005?

6. Draw a linear graph for the following data:

Month	May	June	July	August
Rainfall. (In cm)	5	7	4	6

- 7. Plot the points on a graph: A(4, 9); B(6, 0); C(7, 7); D(2, 4)
- 8. Plot the points A (4, 3). B (4, 0), (4, -2), (4, 6) and join them. Do they lie on the same line?
- 9. Draw a line passing through (4, 5) and (5, 4). Find the coordinates of the points is a straight line.
- 10. Look at the graph of a rectangle in the figure. What are the coordinates of its vertices?



11. Draw a graph of ΔPQR , the coordinates of whose vertices are P (9, 5), Q(7, 7) and C(9, 9).
12. Draw a 'deposit-interest' graph for the following data:

Deposits(in Rs)	5000	6000	7000	8000	9000
Simple Interest(in Rs) for one year	400	480	560	640	720

From the graph, find the interest on Rs 7500 for 1 year.

13. Show that the linear graph obtained by joining the following points is a straight line.
(6, -3), (6, 1), (6, 4) and (6, 6)